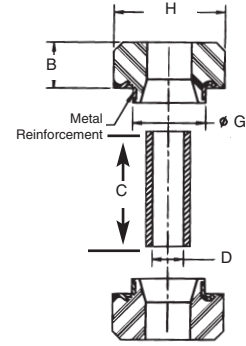
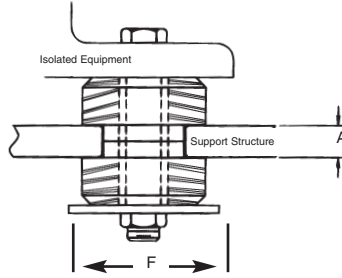
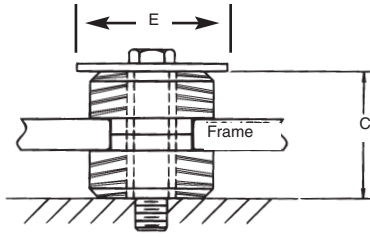


2100 SERIES ISOLATORS

BONDED BUSHING AND SNUBBER



PART NUMBER	MAX LOAD	AXIAL SPRING RATE (lbs/in.)	A	B	C	D	E (MIN)	F (MIN)	G	H
2100-01	16	100								
2100-02	20	150								
2100-03	25	200	.50	.78	1.94	.53	2.25	2.25	1.23	1.88
2100-04	32	250								
2100-05	40	300								