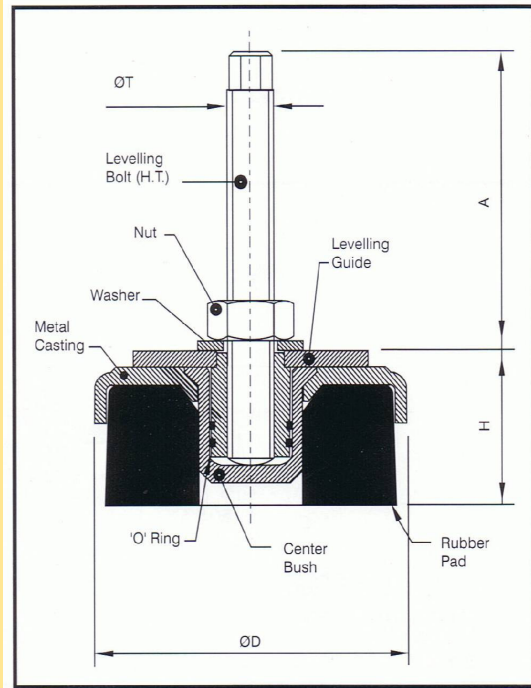


Heavy Duty Industrial Machine Mounts

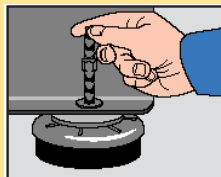


Code	D	H	A	T	Load Range Lbs
PS-1	3.15 in	1.5 in	3.43 in	M12 x 1.25	1100
PS-2	4.75 in	1.81 in	3.11 in	M12 x 1.25	2425
PS-2A	4.75 in	1.81 in	3.11 in	M16 x 1.5	2425
PS-3	6.3 in	2.09 in	4.8 in	M16 x 1.5	4625
PS-3A	6.3 in	2.09 in	4.8 in	M20 x 1.5	4625
PS-4	7.87 in	2.5 in	4.8 in	M16 x 1.5	8800
PS-4A	7.87 in	2.5 in	4.8 in	M20 x 1.5	8800

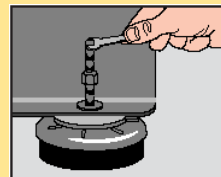
**Easy Installation –
No drilling or bolting
to floor required**



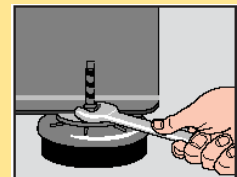
Raise machine and slide mount into place.



Insert leveling bolt through machine base hole and thread into mount. Lower machine onto leveling plate.



Raise or lower machine by turning leveling bolt.



When machine is level, secure in place with washer and lock nut.