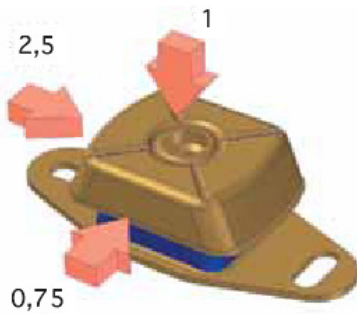
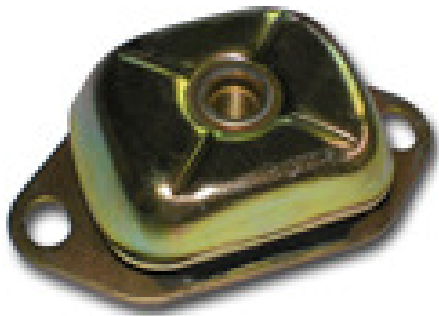


MM Mounts



DESCRIPTION

The Marine-type mounts are ideal for mobile and marine applications thanks to their rugged architecture.

Their special design offers different stiffnesses on the three axes, they are anti-vibration mounts with great vertical elasticity, great longitudinal stiffness and optimal lateral stiffness to offer extra isolation on this axis.

TECHNICAL CHARACTERISTICS

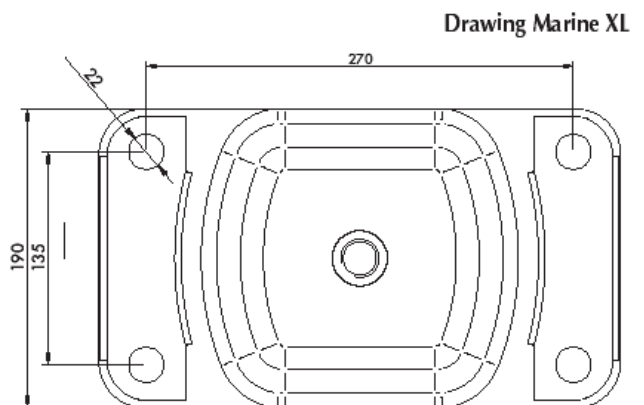
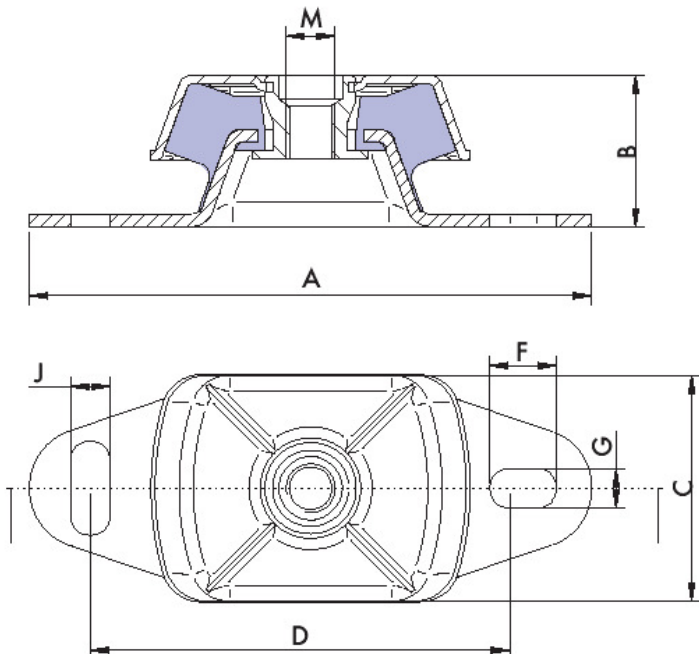
- The top cover has a cross-shaped stamp, which improves its stiffness in mobile applications and also improves the evacuation of oils or liquid which splash onto it.
- The metal parts have an anticorrosive plating which is suitable for outdoor applications.
- The mounts are clearly identified, as the bases are engraved with the hardness.
- They have an interlocking metal component that provides a fail-safe protection for mobile applications. This device limits the ascending vertical movement when the mounting is submitted to shocks at traction.
- The top part protects the elastomer inside from possible dripping oil, diesel, ozone and ultraviolet emissions that may cause major damage to the rubber.
- For marine engine applications, contact the technical department.

The different stiffnesses for each axis make it possible to offer major flexibility in the direction perpendicular to the crankshaft/shaft of the motor. This provides more effective isolation from vibrations of all types of engines.

APPLICATIONS

In mobile rotating machines that need a major isolation capacity from vibrations and noises, such as:

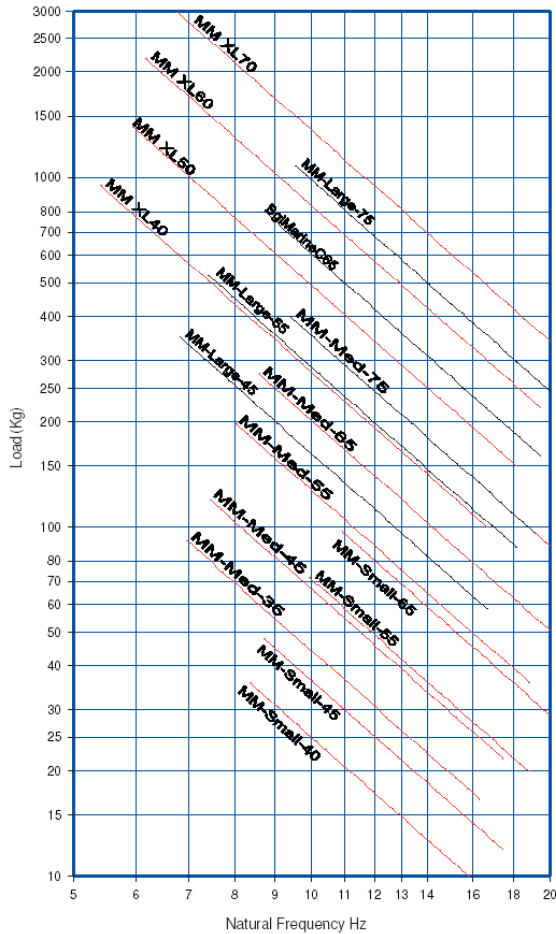
- Pumps
- Mobile electrical panels
- Compressors
- Marine Propellers
- Marine-Land units
- Industrial vehicles
- Ventilators



MM Mounts

Part No.	A	B	C	D	F	G	J	M	Load (kg)	45 Sh	55 Sh	65 Sh	75 Sh	WEIGHT (kg)
SMALL	120	38.5	60	100	14	11	11	M-12	Load (kg)	45	70	95	120	.397
MEDIUM	183	50	75	140	30	13	20	M-16	Load (kg)	120	220	280	400	.857
LARGE	228	68	112	182	34	18	26	M-20	Load (kg)	350	525	800	1080	2.250
XL	330	112	190	270	22	22	26	M-24	Load (kg)	1400	2200	3000	3000	9.600

DYNAMIC MM



MM DEFLECTION

